

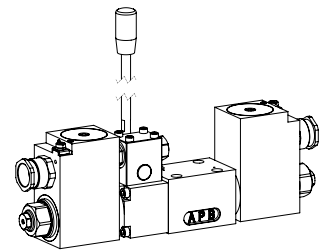
Proportional spool valve with additional hand lever actuation

Flange construction

- ◆ $Q_{max} = 35 \text{ l/min}$
- ◆ 4 volume flow levels
- ◆ $Q_{Nmax} = 25 \text{ l/min}$
- ◆ $p_{max} = 350 \text{ bar}$

NG6 ISO 4401-03

- ⊕ II 2 G Ex db IIC
 - ⊕ II 2 D Ex tD A21 IP65
 - ⊕ I M2 Ex db I Mb
- Class I Division 1
Class I Zone 1



DESCRIPTION

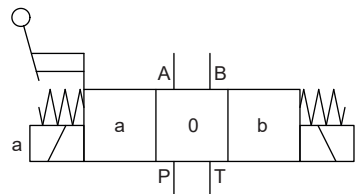
Proportional spool valve according to data sheet 1.10-88 with additional hand lever actuation.

Note! The standard valve cannot be retrofitted.



SYMBOL

Overview spool types see data sheet 1.10-88



TYPE CODE

Spool valve, direct operated

Proportional, explosion proof execution Ex d

Flange construction

International standard interface ISO NG6

Other type designation according to type code data sheet 1.10-88

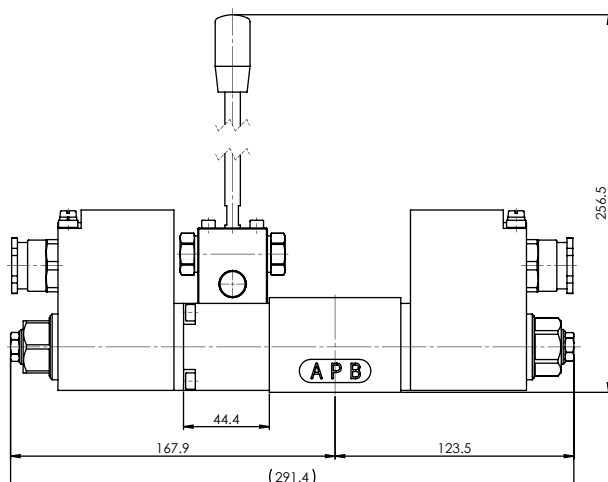
Hand lever

Design index (subject to change)

1.10-88

WD B F A06 - Z568 # 2

DIMENSIONS



GENERAL SPECIFICATIONS

Weight WDBFA06 +1,0 kg

Note! Further specifications, see data sheet 1.10-88



SURFACE TREATMENT

- ◆ The flange, the housing and the lever are zinc-nickel coated

Wandfluh AG Postfach CH-3714 Frutigen
Tel. +41 33 672 72 72 Fax +41 33 672 72 12 sales@wandfluh.com