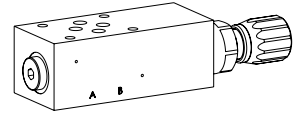


Pressure relief valve

Flange- or Sandwich construction

- ◆ pilot or direct operated
- ◆ $p_{max} = 400 \text{ bar}$
- ◆ $p_{Nmax} = 350 \text{ bar}$
- ◆ $Q_{max} = 80 \text{ l/min}$

NG6
ISO 4401-03



DESCRIPTION

Pilot or direct operated pressure relief valve in flange or sandwich construction. When the adjusted operating pressure is reached, the main spool opens and connects the protected line with the drain to the tank. For flange or sandwich executions with pressure relief in port P, there is a manometer connection.

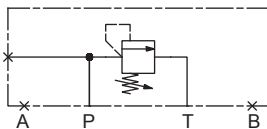
APPLICATION

For the limitation of the operating pressure in hydraulic systems by relieving the oil from the secured oil line P (1), A (2), B (3) to output / tank line T (4).

SYMBOL

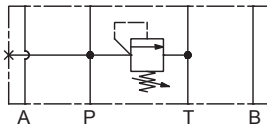
Flange execution

B..FA06-P



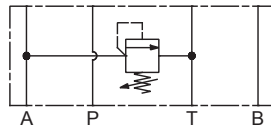
Sandwich execution

B..SA06-P



Sandwich execution

B..SA06-A



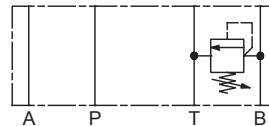
Note!



- ◆ Direct operated execution drawn
- ◆ All variants are also available pilot operated

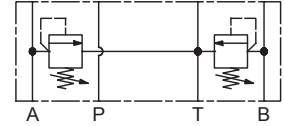
Sandwich execution

B..SA06-B



Sandwich execution

B..SA06-AB



GENERAL SPECIFICATIONS

Designation	Pressure relief valve
Construction	Direct or pilot operated
Mounting	Flange- or Sandwich construction
Nominal size	NG6 according to ISO 4401-03
Actuation	Manually
Ambient temperature	-25...+70 °C
Weight	1,65 kg (Flange construction) 1,40 kg (Sandwich construction P, A, B) 1,95 kg (Sandwich construction AB)

ACTUATION

Actuation

S = lockable key adjustment

D = lockable knob adjustment

Note!



Other specifications, see data sheet of the screw-in cartridges

TYPE CODE

Pressure relief valve		B		<input type="checkbox"/>	<input type="checkbox"/>	<input type="checkbox"/>	A06 -	<input type="checkbox"/>	-	<input type="checkbox"/>	-	<input type="checkbox"/>	#	<input type="checkbox"/>
Direct operated, conical spool		<input type="checkbox"/>	A											
Direct operated, control spool		<input type="checkbox"/>	K											
Pilot operated		<input type="checkbox"/>	V											
Type of adjustment	Key	<input type="checkbox"/>	S											
	Control knob	<input type="checkbox"/>	D											
	Cover	<input type="checkbox"/>	A											
Flange construction		<input type="checkbox"/>	F											
Sandwich construction		<input type="checkbox"/>	S											
Mounting interface acc. to ISO, NG6														
Type list / Function	Flange construction	in P		<input type="checkbox"/>	P	Sandwich construction	in P		<input type="checkbox"/>	P	in A		<input type="checkbox"/>	A
							in B		<input type="checkbox"/>	B	in A and B		<input type="checkbox"/>	AB
Nominal pressure range (p_N) of the built-in screw-in cartridge														
Sealing material	NBR	<input type="checkbox"/>												
	FKM (Viton)	<input type="checkbox"/>		D1										
Design index (subject to change)														
2.1-640														

HYDRAULIC SPECIFICATIONS

Working pressure	p_{max} A and V: 400 bar K: 100 bar
Nominal pressure range	P_{Nmax} A: 63, 210, 315 or 350 bar K: 32 bar V: 63, 160 or 350 bar
Maximum volume flow	Q_{max} K and V: 80 l/min A: 25 l/min
Fluid	Mineral oil, other fluid on request
Viscosity range	12 mm ² /s...320 mm ² /s
Temperature range fluid	-25...+70 °C (NBR) -20...+70 °C (FKM)
Contamination efficiency	Class 18 / 16 / 13
Filtration	Required filtration grade $\beta_{6...10} \geq 75$, see data sheet 1.0-50

Note! Other specifications, see data sheet of the screw-in cartridges


PERFORMANCE SPECIFICATIONS

Note! Detailed performance limits and additional hydraulic specifications may be drawn from the data sheets of the corresponding installed pressure relief cartridge.



Attention! The performance data especially the „pressure-flowcharacteristic,“ on the data sheets of the screw-in cartridges refer to the screw-in cartridges only. The additional pressure drop of the flange body respectively sandwich body must be taken into consideration.


ACCESSORIES

Verstellarten für Schraubpatronen	Data sheet 2.0-50
Threaded subplates	Data sheet 2.9-30
Multi-station subplates	Data sheet 2.9-60
Horizontal mounting blocks	Data sheet 2.9-100
Technical explanations	Data sheet 1.0-100
Filtration	Data sheet 1.0-50

SEALING MATERIAL

NBR or FKM (Viton) as standard, choice in the type code

SURFACE TREATMENT

◆ The sandwich bodies are zinc-nickel coated

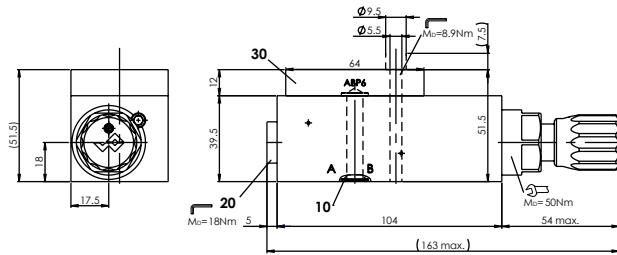
VALVES INSTALLED

The following screw-in cartridges are used in either the flange body or the sandwich body.

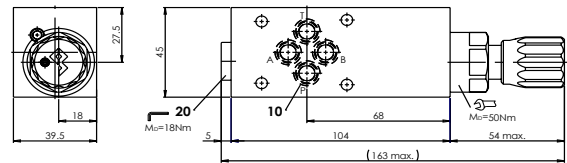
Article	Description	Data sheet no.
BV.PM22	Pressure relief cartridge pilot operated	2.1-530
BA.PM22	Pressure relief cartridge direct operated	2.1-540
BK.PM22	Pressure relief cartridge direct operated	2.1-542

DIMENSIONS

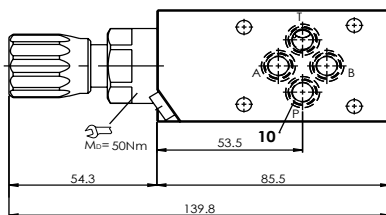
Flange execution
B.DFA06-P



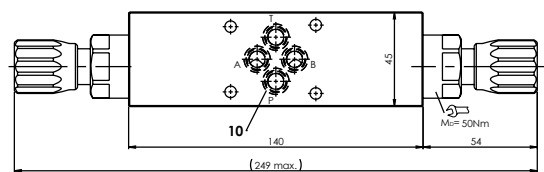
Sandwich execution
B.DSA06-P



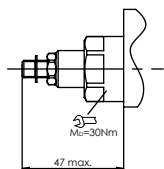
Sandwich execution
B.DSA06-A



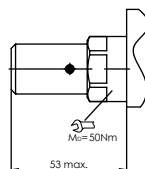
Sandwich execution
B.DSA06-AB



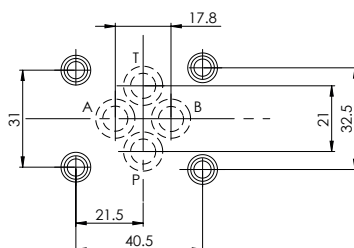
Type of adjustment
B.S.A06



Type of adjustment
B.A.A06



HYDRAULIC CONNECTION



STANDARDS

Mounting interface	ISO 4401-03
Contamination efficiency	ISO 4406

PARTS LIST

Position	Article	Description
20	238.2406	Screw plug VSTI G1/4"-ED
30	173.3150	Blanking plate NG6 ABP6 (only for flange)
	251.2408	Seal kit B..A06, G..A06
	251.2413	Seal kit B..A06, G..A06-D1

Seal kit consisting of:

10	O-ring	ID 9,25 x 1,78
	Seal kit	251.5906 Seal kit B..PM22

INSTALLATION NOTES

Mounting type	Flange or sandwich mounting 4 fixing holes for socket head screws or stud M5
Mounting position	Any, preferably horizontal
Tightening torque	Fixing screws $M_0 = 5,5$ Nm (quality 8.8, zinc coated Knurled nut $M_0 = 60$ Nm