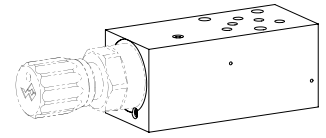


Back pressure valve

Sandwich construction

- ◆ pilot operated or direct operated
- ◆ $p_{max} = 400 \text{ bar}$
- ◆ $p_{Nmax} = 350 \text{ bar}$
- ◆ $Q_{max} = 30 \text{ l/min}$

NG4-Mini Wandfluh standard



DESCRIPTION

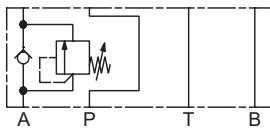
Pilot or direct operated backpressure valve in sandwich construction. The backpressure valve, also called pre-loading valve, opens the main spool when the adjusted pressure is reached.

APPLICATION

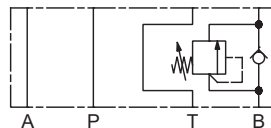
Backpressure valves with pressure adjustment in A, B, AB or T, are used for pre-loading of cylinders / motors, resp. for reaching a back pressure. Miniature values are used where both, reduced dimensions and weight are important.

SYMBOL

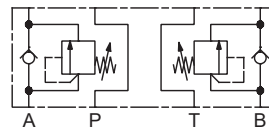
Sandwich execution
G..SA..-A



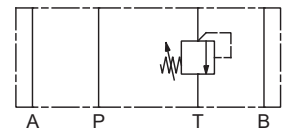
Sandwich execution
G..SA..-B



Sandwich execution
G..SA..-AB



Sandwich execution
G..SA..-T



Note!



- ◆ Direct operated execution drawn
- ◆ All variants are also available pilot operated

TYPE CODE

Back-pressure valve		G		S		A04		-		-		#	
Direct operated		A											
Pilot operated		V											
Type of adjustment	Key	S											
	Control knob	D											
	Cover	A											
Sandwich construction													
Mounting interface acc. to Wandfluh standard, NG4-Mini													
Type list / Function	in T	T		in A		A							
	in A and B	AB		in B		B							
Nominal pressure range (p_N) of the built-in screw-in cartridge													
Sealing material	NBR												
	FKM (Viton)	D1											
Design index (subject to change)													

2.1-720

GENERAL SPECIFICATIONS

Designation	Back pressure valve
Construction	Direct or pilot operated
Mounting	Sandwich construction
Nominal size	NG4-Mini according to Wandfluh standard
Actuation	Manually
Ambient temperature	-25...+70 °C
Weight	1,14 kg (Sandwich construction T) 1,75 kg (Sandwich construction A, B) 1,80 kg (Sandwich construction AB)

HYDRAULIC SPECIFICATIONS

Working pressure	$p_{max} = 400$ bar
Nominal pressure range	P_{Nmax} A: 63, 210, 315 bar V: 63, 160, 350 bar
Maximum volume flow	$Q_{max} = 30$ l/min
Fluid	Mineral oil, other fluid on request
Viscosity range	12 mm ² /s...320 mm ² /s
Temperature range fluid	-25...+70 °C (NBR) -20...+70 °C (FKM)
Contamination efficiency	Class 18 / 16 / 13
Filtration	Required filtration grade $\beta_{6...10} \geq 75$, see data sheet 1.0-50

Note! Other specifications, see data sheet of the screw-in cartridges



ACTUATION

Actuation	S = lockable key adjustment D = lockable knob adjustment
-----------	---

Note! Other specifications, see data sheet of the screw-in cartridges



STANDARDS

Mounting interface	Wandfluh standard
Contamination efficiency	ISO 4406

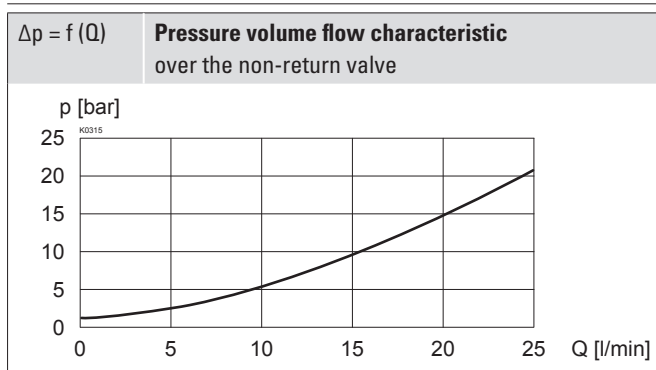
SEALING MATERIAL

NBR or FKM (Viton) as standard, choice in the type code

SURFACE TREATMENT

◆ The sandwich bodies are zinc-nickel coated

PERFORMANCE SPECIFICATIONS



Note! Detailed performance limites and additional hydraulic specifications may be drawn from the data sheets of the corresponding installed pressure relief cartridge.



Attention! The performance data especially the „pressu-re-flowcharacteristic,“ on the data sheets of the screw-in cartridges refer to the screw-in cartridges only. The additional pressure drop of the sandwich body must be taken into consideration.



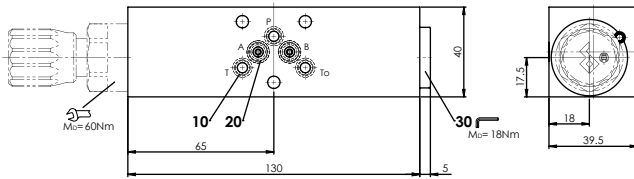
VALVES INSTALLED

The following screw-in cartridges are used in the sandwich body.

Article	Description	Data sheet no.
BV.PM22	Pressure relief cartridge pilot operated	2.1-530
BA.PM22	Pressure relief cartridge direct operated	2.1-540

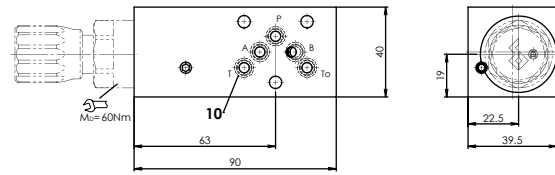
DIMENSIONS

Sandwich execution
 G.DSA04-A / B / AB

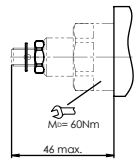


G.DSA04-A: Cartridge on A side
 G.DSA04-B: Cartridge on B side
 G.DSA04-AB: Cartridge on A and B side

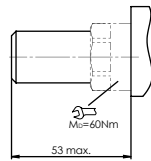
Sandwich execution
 G.DSA04-T



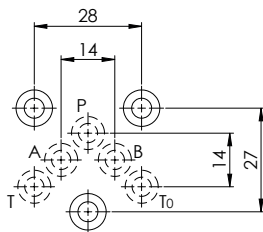
Type of adjustment
 G.SSA04



Type of adjustment
 G.ASA04



HYDRAULIC CONNECTION



ACCESSORIES

Verstellarten für Schraubpatrone	Data sheet 2.0-50
Threaded subplates	Data sheet 2.9-40
Multi-station subplates	Data sheet 2.9-70
Horizontal mounting blocks	Data sheet 2.9-110
Technical explanations	Data sheet 1.0-100
Filtration	Data sheet 1.0-50

PARTS LIST

Position	Article	Description
10	160.2052	O-ring ID 5,28 x 1,78 (NBR)
	160.6052	O-ring ID 5,28 x 1,78 (FKM)
20	160.2067	O-ring ID 6,75 x 1,78 (NBR)
	160.6067	O-ring ID 6,75 x 1,78 (FKM)
30	238.5404	Screw plug VSTI M22 x 1,5

INSTALLATION NOTES

Mounting type	Flange or sandwich mounting 3 fixing holes for socket head screws or studs M5
Mounting position	Any, preferably horizontal
Tightening torque	Fixing screws $M_D = 5,2 \text{ Nm}$ (quality 8.8, zinc coated) Screw-in cartridge $M_D = 60 \text{ Nm}$