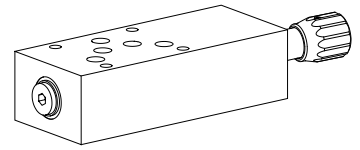


**Accumulator unloading valve
 Sandwich construction**

- 1-point adjustment
- Pilot operated
- $Q_{max} = 30 \text{ l/min}$
- $p_{max} = 400 \text{ bar}$
- $p_{Nmax} = 350 \text{ bar}$

NG10
 ISO 4401-05


DESCRIPTION

Sandwich type pilot operated accumulator unloading valve. Mounting interface acc. to ISO 4401-05. The valve is available with two types of setting, both interlockable. There are three pressure stages to choose from. The valve has an adjustable unloading point and a defined re-switching difference. The steel bodies of the sandwich valve are phosphate coated. Steel cartridge body and adjustment spindle galvanised to protect them against corrosion. The aluminium knob has a natural anodised finish. The quality of this product is reflected in the good performance data and design.

FUNCTION

If the P pressure exceeds the adjustable unloading point, the pilot spool is opening the pilot valve. A control flow starts to flow and the back end of the main spool is depressurised. The resultant pressure difference displaces the main spool towards the spring and the valve switches to unloading circulation. Because of the difference in section in the pilot area, the pilot flow is interrupted as soon as the pressure in the accumulator drops by 15% or 25% of the upper switching point. The pressures at the main spool are equilibrated and the spring displaces the main spool to the closed position. The pump can now build up the system pressure again as far as the unloading point and the cycle starts again.

APPLICATION

Accumulator loading valves are used in hydraulic systems with accumulators. They allow a low cost, energy saving system design in cases where the cylinder flow demand varies considerably or for retaining pressures over a period of time, e.g. for clamping processes. **Note:** An additional relief valve for system protection must be installed. Please refer to the set-up and connection example on page 2.

TYPE CODE

	US	<input type="checkbox"/>	S	A10 - P	<input type="checkbox"/>	#	<input type="checkbox"/>
Accumulator unloading valve pilot operated							
Type of adjustment	screw knob	<input type="checkbox"/>	<input type="checkbox"/>				
		<input type="checkbox"/>	<input type="checkbox"/>				
Sandwich construction							
International standard interface ISO, NG10							
Type list / function	in P						
Pressure range p_N	100 bar	<input type="checkbox"/>	<input type="checkbox"/>				
	160 bar	<input type="checkbox"/>	<input type="checkbox"/>				
	350 bar	<input type="checkbox"/>	<input type="checkbox"/>				
Design-Index (Subject to change)							

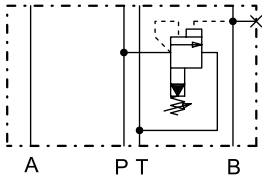
GENERAL SPECIFICATIONS

Description	Pilot operated accumulator unloading valve
Norminal size	NG10 according to ISO 4401-05
Construction	Sandwich construction
Mounting	4 holes for socket cap screw M6 or studs M6
Connections	Connection plates Multi-station flange subplate Longitudinal stacking system
Mounting position	any
Ambient temperature	-20...+50 °C
Fastening torque	$M_D = 9,5 \text{ Nm}$ (Qual 8.8) for fixing screw $M_D = 50 \text{ Nm}$ for screw cartridge
Weight	$m = 2,7 \text{ kg}$

HYDRAULIC SPECIFICATIONS

Fluid	Mineral oil, other fluid on request
Contamination efficiency	ISO 4406:1999, class 18/16/13 (Required filtration grade $\beta_{6...10} \geq 75$) refer to data sheet 1.0-50/2
Viscosity range	12 mm ² /s...320 mm ² /s
Fluid temperature	-20...+70 °C
Peak pressure	$p_{max} = 400 \text{ bar}$
Norminal pressure	$p_N = 100 \text{ bar}$, $p_N = 160 \text{ bar}$, $p_N = 350 \text{ bar}$
Minimum pressure	$p_{min} = 50 \text{ bar}$ for $p_N 160 / 350 \text{ bar}$ $p_{min} = 25 \text{ bar}$ for $p_N 100 \text{ bar}$
Diff. unloading/loading	$15 \pm 3\%$ for $p_N = 160 / 350 \text{ bar}$ $25 \pm 3\%$ for $p_N = 100 \text{ bar}$
Volume flow	$Q_{min} = 1...30 \text{ l/min}$ (over 30 l/min on request)
Leakage volume flow	Maximum 4 drops/min in accumulator operation P - T

For further hydraulic characteristics refer to data sheet: 2.1-548

SYMBOL

REMARK!

Detailed performance data and additional hydraulic specifications may be drawn from the data sheets of the corresponding installed pressure relief cartridge.

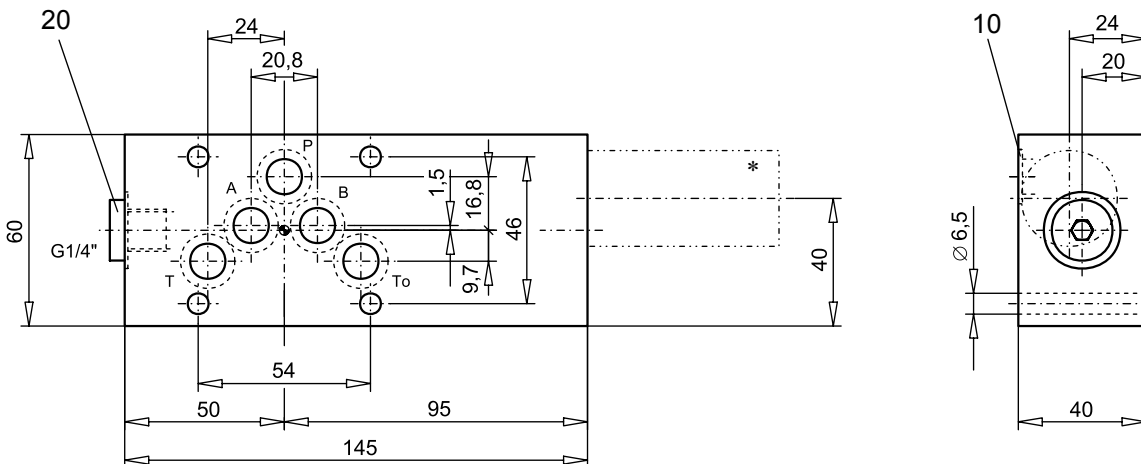
SCREW-IN CARTRIDGES INSTALLED

The following screw-in cartridges are used in the sandwich body:

Type	Designation	Data sheet no.
US.PM22	Accumulator unloading valve • pilot operated	2.1-548

CAUTION!


The performance data especially the „**pressure-flow-characteristic**„, on the data sheets of the screw-in cartridges refer to the screw-in cartridges only. The additional pressure drop of the flange body respectively sandwich body must be taken into consideration.

DIMENSIONS


* The exterior dimensions of the cartridge can be obtained from the corresponding data sheet 2.1-548

PARTS LIST

Position	Article	Description
10	160.2140	O-ring ID 14,00x1,78
20	238.2406	Plug VSTI G1/4"-ED

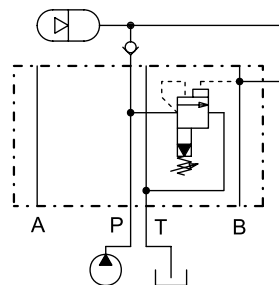
SET-UP AND CONNECTION EXAMPLES

Unloading point adjusted at 100 bar (OS)

Differential value 15%

Loading point: (US) = OS minus 15% = 85 bar

Gas side of accumulator loaded upto max. 90% of US = 76 bar



Technical explanation see data sheet 1.0-100