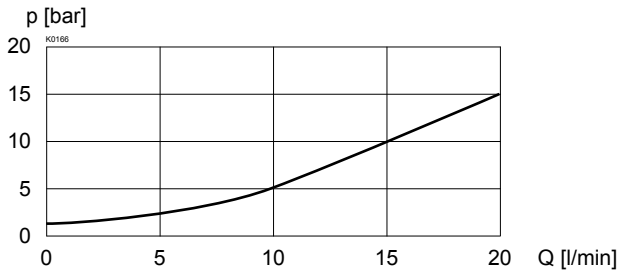


CHARACTERISTICS oil viscosity $\nu = 30 \text{ mm}^2/\text{s}$
 $\Delta p = f(Q)$ Pressure loss/flow characteristics over non-return valve

SCREW-IN CARTRIDGES INSTALLED

The following screw-in cartridges are used in either the flange body or the sandwich body:

Type	Designation	Data sheet no.
MV.PM22	Pressure reducing valve • pilot operated	2.2-530

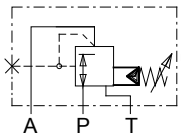
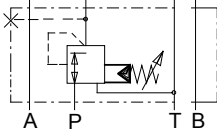

REMARK!

Detailed performance data and additional hydraulic specifications may be drawn from the data sheets of the corresponding installed cartridge.

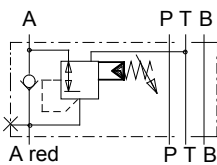

CAUTION!

 The performance data especially the „**pressure-flow-characteristic**„ on the data sheets of the screw-in cartridges refer to the screw-in cartridges only. The additional pressure drop of the flange body respectively sandwich body must be taken into consideration.

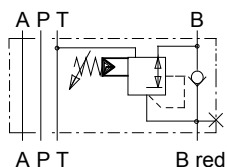
TYPES / DIMENSIONS

 Flange
 MV.FA04-P/A

 Sandwich
 MV.SA04-P


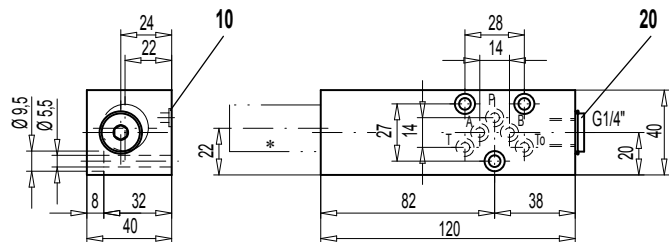
MV.SA04-A



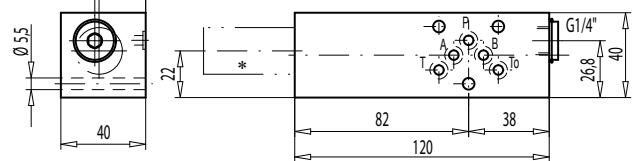
MV.SA04-B



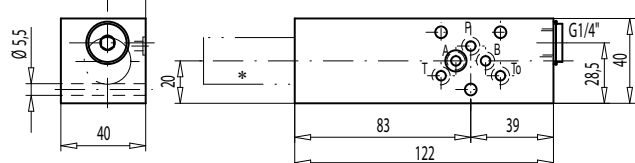
MV.FA04-P/A



MV.SA04-P



MV.SA04-A


PARTS LIST

Position	Article	Description
10	160.2052	O-ring ID 5,28x1,78
20	238.2406	Plug VSTI G1/4"-ED

For sandwich red.pressure in B cartridge is located on B-side

* The total lengths depends on the cartridge type, see data sheet 2.2-530.

ACCESSORIES

 Threaded connection plate and multi-flange subplates Reg. 2.9
 Bypass non-return valve BDRVP4

Technical explanation see data sheet 1.0-100